



**SUPPORT GUIDE FOR
THE NOKIA 5100 WITH AN
INFRARED DATA CONNECTION IN
A POCKET PC DEVICE**

NOKIA

Copyright © Nokia. All rights reserved | Date: 07.02.03, ver. 1.0





Contents

1. INTRODUCTION.....	1
2. MAKING A DIAL-UP CONNECTION.....	1

Copyright © Nokia. All rights reserved.

Reproduction, transfer, distribution or storage of part or all of the contents in this document in any form without the prior written permission of Nokia is prohibited.

Nokia and Nokia Connecting People are registered trademarks of Nokia Corporation. Other product and company names mentioned herein may be trademarks or tradenames of their respective owners.

Nokia operates a policy of continuous development. Nokia reserves the right to make changes and improvements to any of the products described in this document without prior notice.

Under no circumstances shall Nokia be responsible for any loss of data or income or any special, incidental, consequential or indirect damages howsoever caused.

The contents of this document are provided "as is". Except as required by applicable law, no warranties of any kind, either express or implied, including, but not limited to, the implied warranties of merchantability and fitness for a particular purpose, are made in relation to the accuracy, reliability or contents of this document. Nokia reserves the right to revise this document or withdraw it at any time without prior notice

The availability of particular products may vary by region. Please check with the Nokia dealer nearest to you.



1. INTRODUCTION

How to configure Pocket PC 2002 device to function with Nokia 5100 phone as a modem with it

- Pocket PC 2002 device and Nokia 5100 phone are the basic requirements
- Data services (at least outgoing data) should be activated in order to be able to make data calls
- Good GSM coverage and a well-charged battery in both devices as the data connection's power consumption is usually quite high.
- When you wish to use GPRS connection please verify from your operator that GPRS is activated on your SIM card and your SIM card supports GPRS
- When you are roaming in other GSM operator's network please verify that they have also GPRS roaming agreement

2. MAKING A DIAL-UP CONNECTION

1. Go to Start – Settings and
2. tap on the “Connections” tab on the bottom of the screen
3. tap on the “Connections” icon
4. tap on the “Dialing Locations” tab on the bottom of the screen
5. tap on the “Dialing Patterns...” button
6. Set G as dialing pattern on all three areas (Figure 1). Press OK
7. Go back to Connections tab. Press on the drop down list and choose “Internet settings” then tap on “Modify...” (Figure 2).

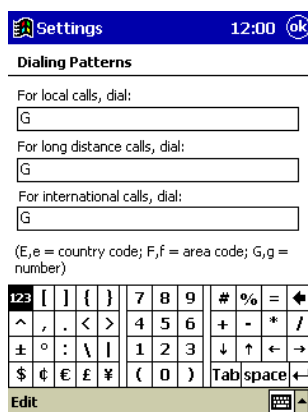


Figure 1.

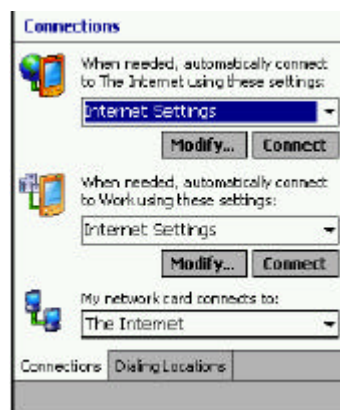


Figure 2.

8. Choose “New...” and name the connection. Select “Generic IrDA modem” from the drop down list (Figure 3).

9. Tap on the “Advanced...” button (Figure 4.) to verify the connection preferences. After that tap on the “OK” on the top right corner of the screen.

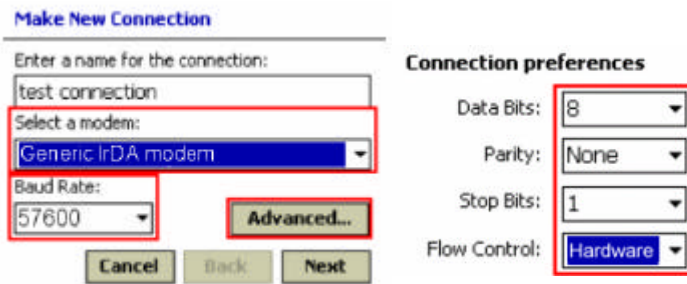


Figure 3.

Figure 4.

10. Tap “Next” button and enter the phone number

10.1. For GPRS connection type *99# as phone number (please verify from your GPRS service provider) without area code or country code. And for normal modem connection enter your Internet Service Provider’s phone number. Tap “Next”

11. Uncheck the “Wait for dial tone before dialing” and

12. then enter Access Point Name, if you are making a GPRS connection, either to your phone (refer to User’s Guide) or to “Extra dial-string modem commands”:
 +cgdcont=,,"xxx" (NOTE! xxx refers to Access Point Name which you will get from your GSM operator) (Figure 5.). If you are making a normal modem connection or HSCSD connection then see the Tip box for further information.

13. tap “Finish” and then tap “OK” on the top right corner of the Pocket PC screen.

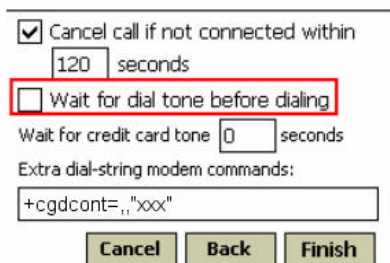


Figure 5.



Tip: If you wish to make a HSCSD connection then type the following dial-string in to the Extra dial-string... box:

Extra dial-string modem commands:

+cbst=16,0,1;+chsn=4,3,0,4 (to get 28.8 Kbps modem connection)
 +cbst=81,0,1;+chsn=6,3,0,8 (to get 38.4 Kbps ISDN v.110 connection)
 +cbst=50,0,1;+chsn=6,3,0,8 (to get 43.2 Kbps ISDN v.120 connection)

* If you wish to make a GPRS connection then put Access point name either to your phone or put the following AT command to Extra dial-string...box:

+cgdcont=,,"xxx" (NOTE! xxx refers to Access Point Name which you will get from your GSM operator)

14. Tap “Connect”

15. If you are making a GPRS connection you can usually leave the username, password and domain fields empty (Please verify from your GPRS service provider). If you are making a normal modem connection to your ISP you usually need to enter your username and password fields.

16. After a second the GPRS session starts or if making a dial-up connection the phone starts to dial.

17. When the message “connected” appears, you are on-line.

18. Now start the Internet Explorer from the Start menu.

19. To end the session, click the two arrows on the top of the Pocket PC screen and tap End (Figure 6.).

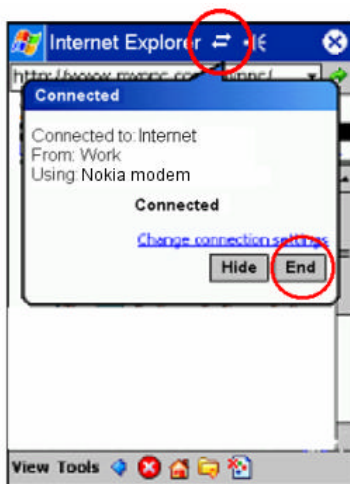


Figure 6.